

Panama Historic Condominiums

Galveston, Texas

Strand Retail Space

Available

2,700 sf

LOCATION

- 202 Rosenberg @ Strand
- Great Retail Corner
- Across from Cruise Terminal
- Across from Historic Railroad Museum



2311 Dunlavy tel 713 526 1802
Houston Texas 77006 fax 713 526 2360

www.kaldis.com

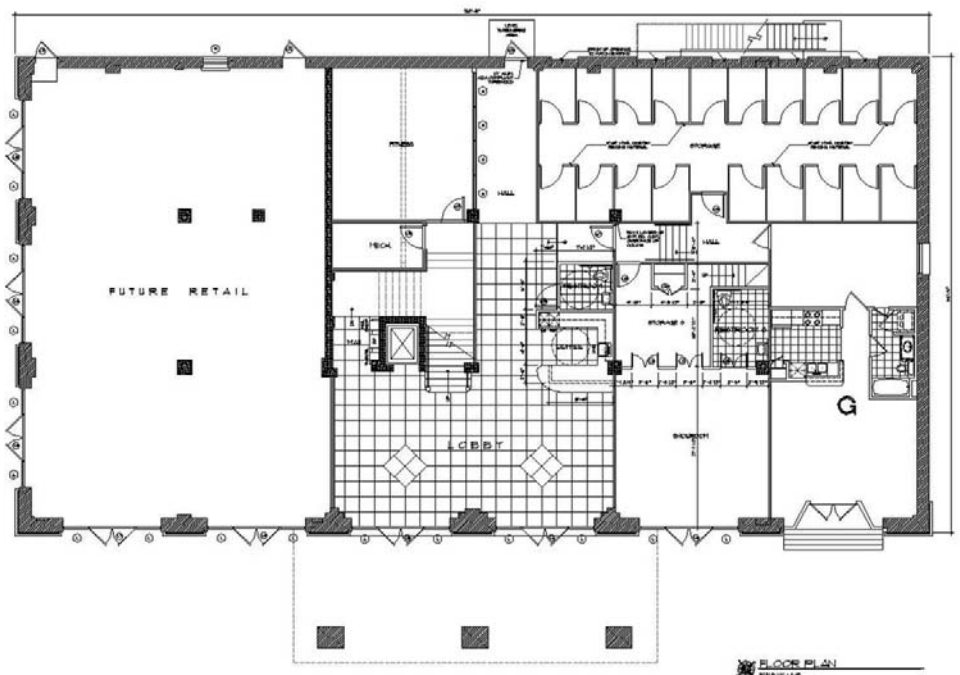
KALDIS
Development Interests

History:

The historic Panama Hotel was built in 1912 to serve rail passengers from the old Santa Fe Train Station, which is now Galveston's Railroad Museum.

It's adapted re-use is an 18-unit Condominium Development.

Retail Rate \$3,500/month



FLOOR PLAN
SCALE: 1/8" = 1'-0"